

The Impact of HIV and AIDS

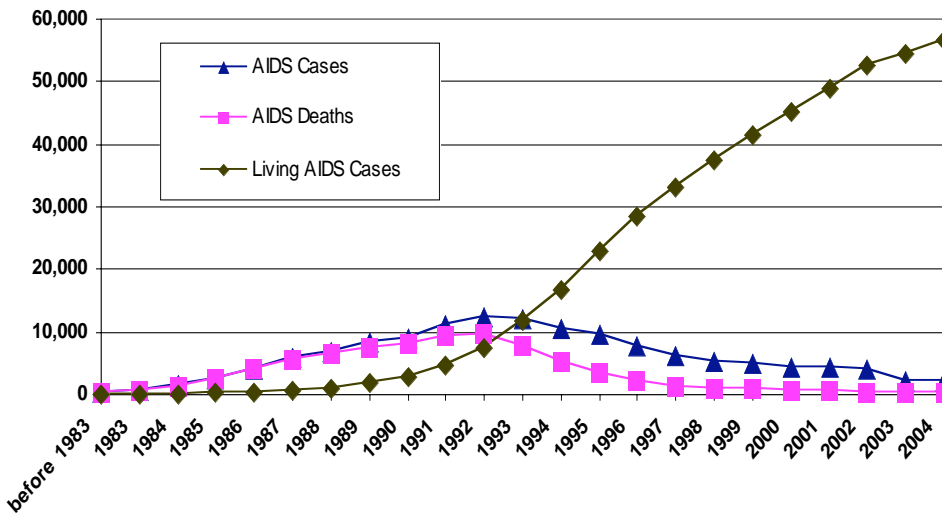
	AIDS Cases to Date (since 1981)	AIDS Deaths to Date (since 1981)	Estimated Persons Living with AIDS	Estimated Persons Living with HIV/AIDS	Estimated New Infections per Year
World	Not currently available	20,000,000+ (estimated)	Not currently available	39.5 million	4.3 million
United States	984,155	529,113	421,873	1,039,000 – 1,185,000	40,000
California	145,868	83,734	62,134	151,000	6,788- 8,988
San Francisco	27,234	18,420	8,814	18,679	975

Note: Reliable World data on “AIDS Cases to Date” are not available because of the limited capacity that many countries have to conduct accurate AIDS surveillance.

Unless otherwise stated, data sources used above and throughout this report are as follows:

- Global figures are United Nations AIDS and World Health Organization estimates from December 2006 (see *AIDS Epidemic Update 2006*, http://data.unaids.org/pub/EpiReport/2006/2006_EpiUpdate_en.pdf).
- United States figures were reported in the U.S. Centers for Disease Control and Prevention’s *HIV/AIDS Surveillance Report, Vol. 17*, through December 2005 (revised June 2007).
- California figures were reported by the California Department of Health Services, Office of AIDS as of June 30, 2007, except for the estimated persons living with HIV/AIDS, which is from *California HIV Prevention Indicators: Brief Report #3* (Universitywide AIDS Research Program, December 1, 2005), and the estimated new infections per year, which was derived from the Consensus Meetings on HIV/AIDS Incidence and Prevalence in California, December 2001.
- San Francisco figures were reported by the San Francisco Department of Public Health (SFDPH) as of June 30, 2007, with the exception of “Estimated Persons Living with HIV/AIDS” and “Estimated new infections per year”, which were reported by SFDPH in its 2006 HIV Consensus Estimates document.

AIDS Cases, Deaths and Living AIDS Cases in California through 2005



- California ranks second in the nation in cumulative AIDS cases, surpassed only by New York.
- California accounted for 14% of cumulative AIDS cases reported in the U.S. (1981 through 2004).
- The number of people living with AIDS in California continues to increase. There are over 62,000 Californians living with AIDS.
- Since 1981, 145,868 people have been diagnosed with AIDS in California. Of these individuals, 83,734 (57%) have died.

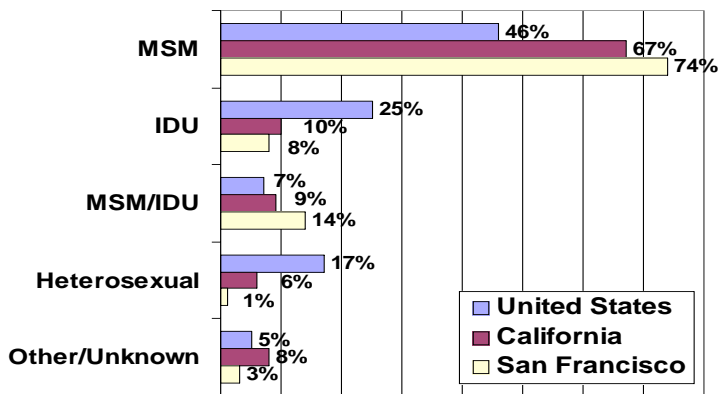
This report is compiled quarterly by the Office of the Executive Director of the San Francisco AIDS Foundation
 For more information, please call 415-487-3080

HIV/AIDS and Transmission

AIDS Cases by Transmission Category: United States, California, and San Francisco, 1981-Present

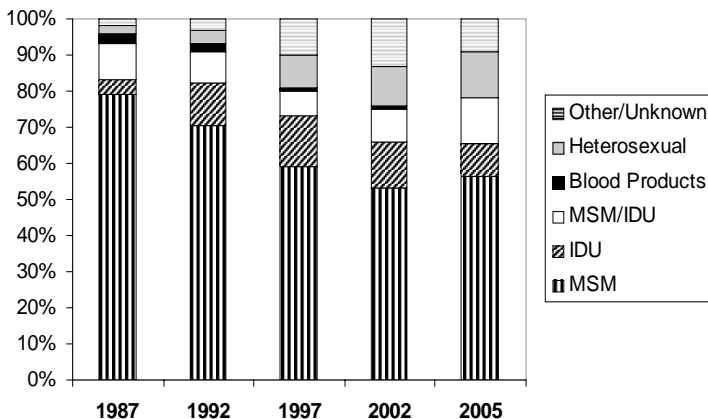
	Men who have sex with men (MSM)	Injection Drug Use (IDU)	MSM/IDU	Heterosexual	Receipt of transfusion, blood components or tissue	Hemophilia	Pediatric (ages 0-12)	Other/Unknown
United States	452,111	241,364	65,881	163,609	(see Other)	(see Other)	9,101	52,089
California	97,955	15,079	13,707	8,617	1,730	575	791	7,414
San Francisco	20,159	2,076	3,831	372	143	16	38	599

Percentage of Adult AIDS Cases by Transmission Category: United States, California, and San Francisco, 1981-Present



- Transmission mode varies regionally throughout the U.S. In California, 77% of cumulative AIDS cases are attributed to the combined risk factors of MSM and MSM/IDU. This figure compares to over 53% nationally for the same combined categories.
- According to the CDC, during 2003 *new* HIV infections in 41 areas with confidential name-based HIV reporting indicate that 18% are attributable to heterosexual sex and 34% to sex between men. Twelve percent are due directly to injection drug use. The remaining 36%

Percentage of Adult AIDS Cases by Exposure Category: California, 1987, 1992, 1997, 2002, 2005



Exposure Category	1987	1992	1997	2002	2005
MSM	80%	71%	59%	53%	57%
IDU	4%	12%	14%	13%	9%
MSM/IDU	10%	9%	7%	9%	13%
Blood Products	3%	2%	1%	1%	<1%
Heterosexual	2%	4%	9%	11%	13%
Other/Unknown	2%	3%	10%	13%	9%

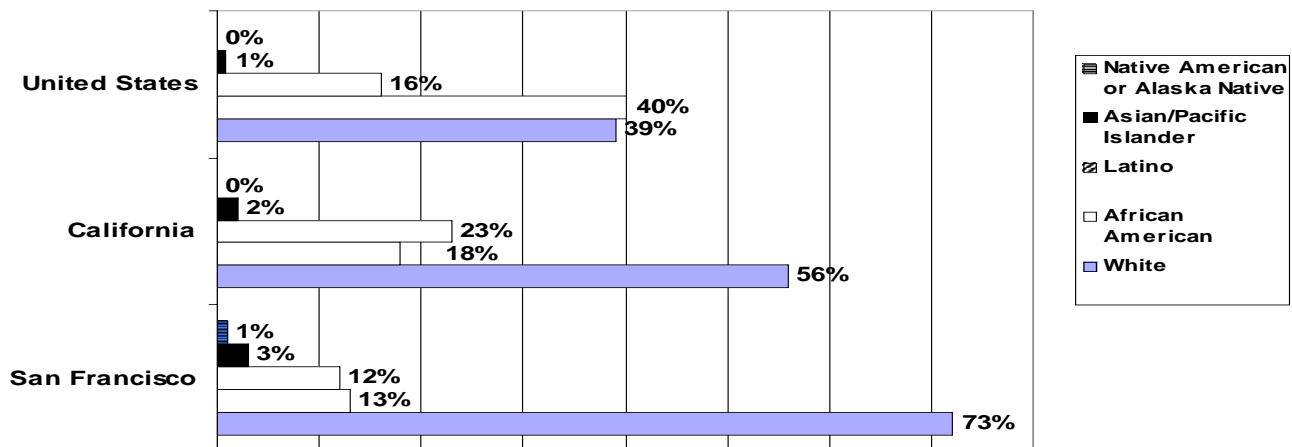
Note: Numbers may not add exactly due to rounding.

HIV/AIDS and Race/Ethnicity

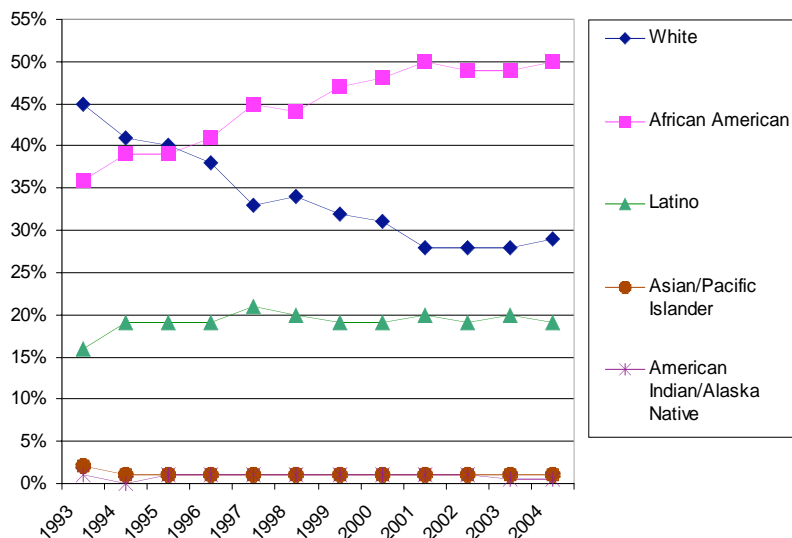
AIDS Cases by Race/Ethnicity: United States, California, and San Francisco, 1981-Present

	White	African American	Latino	Asian/Pacific Islander	American Indian or Alaska Native	Other/Unknown
United States	385,537	397,548	155,179	7,659	3,238	34,994
California	81,804	25,944	33,460	3,497	660	503
San Francisco	19,577	3,455	3,170	849	142	41

Percentage of AIDS Cases by Ethnicity: United States, California and San Francisco, 1981-Present



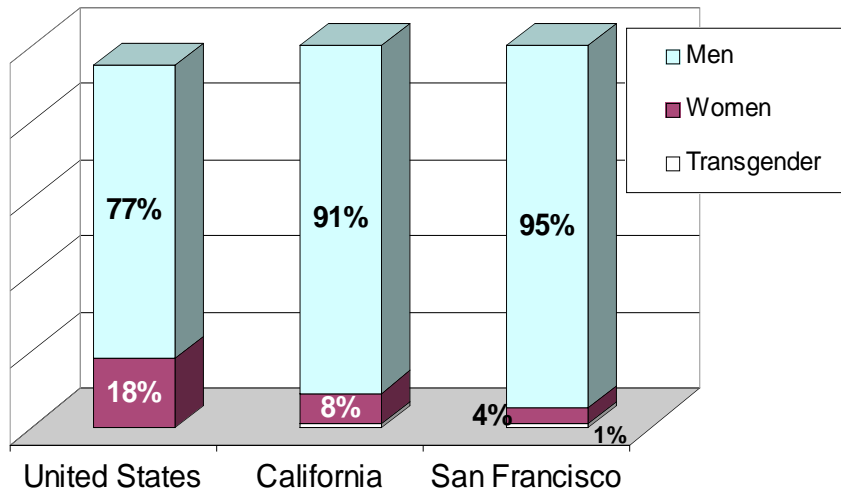
Percent of Newly Diagnosed Adult AIDS Cases by Race/Ethnicity: United States, 1993 - 2004



- People of color are disproportionately affected by HIV/AIDS; in 2004 minority Americans represented the majority of new cases (70%) and of those estimated to be living with AIDS (64%).
- According to a recent study of men who have sex with men (MSM) in five U.S. cities, African American MSM were more than twice as likely to be HIV-positive than other MSM: 46% of African-American MSM were HIV-positive, as compared to 21% of white MSM and 17% of Latino MSM.

HIV/AIDS and Gender

Percentage of AIDS Cases by Gender: United States, California, and San Francisco, 1981-Present



AIDS Cases by Gender: 1981-Present

United States¹

Women: 181,802
Men: 761,723
Children: 9,101

California

Women: 12,256
Men: 132,146
Children: 660
Transgender: 806

San Francisco

Women: 1,099
Men: 25,775
Children: 38
Transgender: 360

- According to the CDC, women continued to account for a growing proportion of new AIDS cases nationally, rising from 7% in 1986 to 27% in 2004. The most recent data (2004) show that African American women account for 67% of new AIDS cases among women; and Latinas account for 15% of those cases.
- Nationally, new HIV infections reported in 2003 among women (in the 35 areas with confidential name-based HIV infection reporting) were primarily attributable to heterosexual sex (77%) and injection drug use (21%).
- The AIDS epidemic in California continues to exist predominantly among men. The proportion of cumulative AIDS cases among women in California is smaller (8%) than that for the United States (19%).

¹ Transgender figures are not broken out in U.S. data.

HIV/AIDS and Age

AIDS Cases by Age at Diagnosis: United States, California and San Francisco, 1981-Present

	United States
Under age 13	9,112
Age 13-14	1,062
Age 15-24	40,084
Age 25-34	308,067
Age 35-44	373,202
Age 45-54	159,682
Age 55-64	46,920
Age 65 or older	14,503

Notes:

- 1) In 2002, the CDC changed its Age classification ranges and these no longer correspond to the California and San Francisco ranges.
- 2) The United States data are cumulative estimated number of AIDS cases 1981 through 2004, while California and San Francisco data are reported AIDS cases through September 2006.
- 3) The figures below do not include 360 AIDS cases among San Francisco's transgender population. The 360 include: 85 cases among 13-29 year olds, 163 cases among 30-39 year olds, and 112 cases among those 40 years and older.

	California	San Francisco
Age 0-12	660	38
Age 13-19	601	30
Age 20-29	22,002	3,039
Age 30-39	63,113	12,088
Age 40-49	40,994	8,454
Age 50 and over	18,495	3,225